



# Madison Parks Division

210 Martin Luther King, Jr. Blvd., Room 104  
PO Box 2987  
Madison, WI 53701-2987  
608-266-4711 • cityofmadison.com/parks



June 3, 2022

Bryan Johnson  
City of Madison Streets Division  
Recycling Coordinator/Public Information Officer

RE: Demolition of 3457 Milwaukee St

The City Parks Division acquired the property located at 3457 Milwaukee Street for a future expansion of O.B. Sherry Park. The existing single family residence is a 2 bedroom, 2 bath structure, approximately 900 square foot building with a semi-finished basement. It was constructed in 1951. A private contractor will be completing the demolition of the building and will recycle and dispose of all materials in accordance with this plan.

The Deconstruction Reuse and Recycling Plan are divided into three sections in order to coordinate with the project timeline.

- I. Reuse Phase:** Salvaging reusable items.
- II. Pre-Deconstruction Phase Recycling:** Hazardous and regulated materials must be removed for proper disposal prior to full deconstruction. These items include lighting, electronics, batteries, refrigerants, appliances, and hazardous chemicals.
- III. Deconstruction Phase Recycling:** Recycling building materials during deconstruction and demolition can reduce negative environmental impacts and reduce landfill fees. Recyclable materials include concrete, brick, asphalt, metal, and wood.

## **I. Reuse Phase**

City staff coordinated with Advanced Health and Safety and with Habitat for Humanity Restore to determine what materials may be salvaged and reused. Due to the age and condition of the houses, the windows and doors were not of the quality that Habitat for Humanity Restore would take for reuse. Habitat for Humanity Restore did remove appliances and cabinets from the home for resale. See pictures in Appendix A.

## **II. Pre-Deconstruction Recycling**

Asbestos testing was completed by Advanced Health and Safety. See list below for specific asbestos material found in the house. Advanced Health and Safety has removed and safely disposed of the asbestos.

- Asbestos containing friable materials:
  - TSI tape on ductwork, the sample was taken from duct located in the basement.

- Asbestos containing Category II Non-Friable Materials
  - None
- Asbestos containing Category I Non-Friable Materials
  - Black adhesive, the sample was taken from the eastside walls of the basement.

State hazardous waste regulations provide guidance for recycling the following items after the reuse phase is complete and prior to building deconstruction.

- Fluorescent Lighting
- Batteries
- Refrigerants
- Appliances and HVAC equipment
- Hazardous chemicals, including paint
- Thermostats containing mercury
- Computers and Electronics

#### Lighting

- *Background Information:* State hazardous waste regulations require all light bulbs and ballasts containing mercury or polychlorinated biphenyls (PCBs) to be recycled. If not reused, bulbs and ballasts must be taken to a recycler or consolidator. The consolidator or recycler must be licensed and in compliance with applicable environmental regulations.
- *Site Materials:* 19 fluorescent lightbulb tubes were found on site.
- *Recycler:* Advanced Health and Safety

#### Batteries

- *Background Information:* Batteries may contain toxic heavy metals and chemicals, including nickel, cadmium, manganese, mercury, lead, and sulfuric acid, which threaten our environment if not properly handled.
- *Site Materials:* There were no batteries found on site.

#### Refrigerants

- *Background Information:* Refrigerants are used in cooling equipment such as air conditioners and refrigerators. Wisconsin Administrative Code NR 488 regulates handling and disposal of refrigerants. It requires all commercial entities handling and recovering these refrigerants and coolants to register with the Wisconsin DNR and annually certify that they will transport items in a manner that prevents refrigerant releases. Documentation of proper handling must be retained for three years.
- *Site Materials:* Two window AC units were identified on site.
- *Recycler:* Advanced Health and Safety.

#### Appliances and HVAC equipment

- *Background Information:* Wisconsin Statute 287.07 requires the recycling of major appliances including clothes washers and dryers, dishwashers, air conditioners, stoves, ovens, microwave ovens, freezers, refrigerators, water heaters, furnaces, dehumidifiers, and boilers. All of these appliances are banned from landfills as of 1991. Microwave ovens may be landfilled only if the capacitor has been removed. Most major appliances are made

primarily of high quality steel. They also may contain glass, plastic, rubber, copper, aluminum, and several hazardous materials that require special handling. Any appliances that have refrigerants or coolants must be handled according to instructions in the refrigerants section.

- *Site Materials:* The stove and refrigerator were recycled by Habitat for Humanity Restore. The water softener, water heater, dishwasher, microwave and heating system unit were recycled by Advanced Health and Safety.
- *Recycler:* Habitat for Humanity Restore and Advanced Health and Safety.

#### Paints, Stains, and Other Chemicals

- *Background Information:* Oil-based paints, products containing organic solvents, and latex paint cans that are more than half full are considered hazardous waste and must be taken to a designated recycler for disposal. Latex-based paints can be properly hardened and disposed of in the trash if the can is less than half full.
- *Site Materials:* No chemicals were found on site.

#### Thermostats Containing Mercury

- *Background Information:* Mercury-containing thermostats hold mercury equivalent to the amount in 200-300 fluorescent bulbs and must be recycled. Though mercury is a hazardous waste, the Universal Waste Rules allow thermostats to be recycled without going through a hazardous waste permitting process. Care must be taken not to break the glass bulb containing the mercury during deconstruction and transportation.
- *Site Materials:* No thermostats were found on site.

### **III. Deconstruction Phase Recycling**

This section includes information for the recycling or proper disposal of the following:

- Concrete and Concrete Block
  - Metal
  - Cardboard, Paper, Cans, and Bottles
  - Wood
  - Asphalt Shingles
- 
- Concrete and Concrete Block
  - *Background Information:* Clean concrete and concrete block may be crushed and used as fill, aggregate in roadbeds, or for recycling into new concrete. “Clean” means that concrete is free of dirt, clay, wood, and any paint. Recycling these materials costs substantially less than hauling them to a landfill. Recycling also reduces the impacts of quarrying and extracting materials for new concrete.
  - *Site Materials:* The existing house sits on concrete basement walls and has an asphalt driveway.  
*Recyclers:*
    - Homburg Construction, 5715 Milwaukee Street, Madison, WI, 53704; (608) 244-3554
      - **Details:** In order to be recycled to use as aggregate, concrete must be free of rebar. If it contains rebar, it will be used as clean fill. Homburg has a staffed scale and can provide receipts.

### Dane County Landfill

7102 US Hwy 12, Madison WI 53718; (608) 838-9555

- **Cost:** The rates are as follows:  
Construction for Recycling - \$52.00 per ton
- **Logistics:** Monday - Friday: 7:00 - 3:00  
**No loads accepted after 2:45** - must be unloaded and out by closing.
- **Details:** Concrete, rock, brick, stone, porcelain, tile

### Metal

- *Background Information:* Though not required by law, we recommend recycling all metals. Painted metal, even if it contains lead-bearing paint, is typically recyclable.
- *Site Materials:* The materials that contained sources of metal were the gutters, ducts, exterior hand railing, plumbing and wiring.
- *Recyclers:*  
All Metals Recycling 1802 South Park St, Madison, WI 53713; (608) 255-0960
  - **Cost:** All Metals Recycling charges about \$150 for dumpster rental. They offer a rebate per ton, depending on the type of metal.
  - **Details:** They accept all types of metal for recycling, including iron, steel, aluminum, and copper. Metal must not be contaminated with materials such as cement, plastic wrap, or wood. They also accept metal appliances if the refrigerants and coolants have been removed.

### Dane County Landfill

7102 US Hwy 12, Madison WI 53718; (608) 838-9555

- **Cost:** The rates are as follows:  
Construction for Recycling - \$52.00 per ton
- **Logistics:** Monday - Friday: 7:00 - 3:00  
**No loads accepted after 2:45** - must be unloaded and out by closing.
- **Details:** Sheet metal, window frames, pipe, lamps, wire, etc.

### Cardboard, Paper, Cans, and Bottles

- *Background Information:* Cardboard, paper, cans, and bottles must be recycled under Wisconsin law.
- *Site Materials:* Any recyclable materials on-site or generated during demolition must also be recycled.
- *Recycler:*  
Madison Recycling Center, 2200 Fish Hatchery Road, Madison, WI 53713; (608) 251-2115.
  - **Cost:** No charge for recycling.
  - **Logistics:** Monday – Friday: 7:30am-2:30pm
  - **Details:** The Madison Recycling Center is not affiliated with the City of Madison. It is operated by Recycle America, a division of Waste Management.

## Wood

- *Background Information:* Any unpainted and untreated wood is recyclable. If possible, the demolition contractor should collect unpainted and untreated dimensional lumber and engineered lumber, such as oriented strand board (OSB), plywood, and particleboard for recycling.
- *Site Materials:* Any untreated and unpainted wood that can be separated from other building materials is recyclable. While most of the wood in the structures is painted or treated, wooden studs and subfloor materials may be present.
- *Recycler:*
  - Dane County Landfill  
7102 US Hwy 12, Madison WI 53718; (608) 838-9555
  - **Cost:** The rates are as follows:  
Construction for Recycling - \$52.00 per ton
  - **Logistics:** Monday - Friday: 7:00 - 3:00  
**No loads accepted after 2:45** - must be unloaded and out by closing.
  - **Details:** Plywood, tree trimmings, pallets, cabinets, doors, dimensional lumber, etc.

## Asphalt Shingles

- *Background Information:* Asphalt shingles have been banned from the Dane County Landfill. This material can be ground and used as part of a mix to manufacture new asphalt. Recycling asphalt is cost effective and reduces consumption of oil and other raw materials.
- *Site Materials:* The roofing material is asphalt shingles.
- *Recycler:*
  - Dane County Landfill  
7102 US Hwy 12, Madison WI 53718; (608) 838-9555
  - **Cost:** The rates are as follows:  
Clean Loads - \$48.00 per ton (only asphalt shingles, nails, and tar paper)
  - **Logistics:** Monday - Friday: 7:00 - 3:00  
**No loads accepted after 2:45** - must be unloaded and out by closing.
  - **Details:** Must be clean shingles (only asphalt shingles, nails, & tar paper)

Attachment A: Pictures for 3457 Milwaukee Street



Attachment A: Pictures for 3457 Milwaukee Street



Attachment A: Pictures for 3457 Milwaukee Street







# Madison Parks Division

210 Martin Luther King, Jr. Blvd., Room 104  
PO Box 2987  
Madison, WI 53701-2987  
608-266-4711 • cityofmadison.com/parks



June 3, 2022

Bryan Johnson  
City of Madison Streets Division  
Recycling Coordinator/Public Information Officer

RE: Demolition of 3461 Milwaukee St

The City Parks Division acquired the property located at 3461 Milwaukee Street for a future expansion of O.B. Sherry Park. The existing single family residence is a 3 bedroom, 1.5 bath structure, approximately 1260 square foot building with a semi-finished basement. It was constructed in 1955. A private contractor will be completing the demolition of the building and will recycle and dispose of all materials in accordance with this plan.

The Deconstruction Reuse and Recycling Plan are divided into three sections in order to coordinate with the project timeline.

- I. Reuse Phase:** Salvaging reusable items.
- II. Pre-Deconstruction Phase Recycling:** Hazardous and regulated materials must be removed for proper disposal prior to full deconstruction. These items include lighting, electronics, batteries, refrigerants, appliances, and hazardous chemicals.
- III. Deconstruction Phase Recycling:** Recycling building materials during deconstruction and demolition can reduce negative environmental impacts and reduce landfill fees. Recyclable materials include concrete, brick, asphalt, metal, and wood.

## **I. Reuse Phase**

City staff coordinated with Advanced Health and Safety and with Habitat for Humanity Restore to determine what materials may be salvaged and reused. Due to the age and condition of the houses, the windows and doors were not of the quality that Habitat for Humanity Restore would take for reuse. Habitat for Humanity Restore did remove appliances and cabinets from the home for resale. See pictures in Appendix A.

## **II. Pre-Deconstruction Recycling**

Asbestos testing was completed by Advanced Health and Safety. See list below for specific asbestos material found in the house. Advanced Health and Safety has removed and safely disposed of the asbestos.

- Asbestos containing friable materials:
  - Black spray on material on the bottom of the double kitchen sink

- Asbestos containing Category II Non-Friable Materials
  - Cement board panels on the ceiling in the garage. 12' x 24'. There is a loose blown insulation over the panels. There are a total of nine 4' x 8' panels.
  - Hard white caulking on the curved portion of the exterior wall brick near the door on the north side. Three linear feet.
  
- Asbestos containing Category I Non-Friable Materials
  - Gray 9 inch floor tiles plus black mastic in the basement. On concrete. 350 ft square.
  - Green 9 inch floor tiles plus black mastic in the basement. On concrete. 350 ft square.
  - Chimney flashing mastic on the metal flashing around the chimney on the roof. 16 linear feet.

State hazardous waste regulations provide guidance for recycling the following items after the reuse phase is complete and prior to building deconstruction.

- Fluorescent Lighting
- Batteries
- Refrigerants
- Appliances and HVAC equipment
- Hazardous chemicals, including paint
- Thermostats containing mercury
- Computers and Electronics

### Lighting

- *Background Information:* State hazardous waste regulations require all light bulbs and ballasts containing mercury or polychlorinated biphenyls (PCBs) to be recycled. If not reused, bulbs and ballasts must be taken to a recycler or consolidator. The consolidator or recycler must be licensed and in compliance with applicable environmental regulations.
- *Site Materials:* 19 fluorescent lightbulb tubes were found on site.
- *Recycler:* Advanced Health and Safety

### Batteries

- *Background Information:* Batteries may contain toxic heavy metals and chemicals, including nickel, cadmium, manganese, mercury, lead, and sulfuric acid, which threaten our environment if not properly handled.
- *Site Materials:* There were no batteries found on site.

### Refrigerants

- *Background Information:* Refrigerants are used in cooling equipment such as air conditioners and refrigerators. Wisconsin Administrative Code NR 488 regulates handling and disposal of refrigerants. It requires all commercial entities handling and recovering these refrigerants and coolants to register with the Wisconsin DNR and annually certify that they will transport items in a manner that prevents refrigerant releases. Documentation of proper handling must be retained for three years.
- *Site Materials:* A central AC unit was identified on site, exterior.
- *Recycler:* Advanced Health and Safety.

### Appliances, and HVAC equipment

- *Background Information:* Wisconsin Statute 287.07 requires the recycling of major appliances including clothes washers and dryers, dishwashers, air conditioners, stoves, ovens, microwave ovens, freezers, refrigerators, water heaters, furnaces, dehumidifiers, and boilers. All of these appliances are banned from landfills as of 1991. Microwave ovens may be landfilled only if the capacitor has been removed. Most major appliances are made primarily of high quality steel. They also may contain glass, plastic, rubber, copper, aluminum, and several hazardous materials that require special handling. Any appliances that have refrigerants or coolants must be handled according to instructions in the refrigerants section.
- *Site Materials:* The appliances were recycled by Habitat for Humanity Restore.
- *Recycler:* Habitat for Humanity Restore

### Paints, Stains, and Other Chemicals

- *Background Information:* Oil-based paints, products containing organic solvents, and latex paint cans that are more than half full are considered hazardous waste and must be taken to a designated recycler for disposal. Latex-based paints can be properly hardened and disposed of in the trash if the can is less than half full.
- *Site Materials:* No chemicals were found on site.

### Thermostats Containing Mercury

- *Background Information:* Mercury-containing thermostats hold mercury equivalent to the amount in 200-300 fluorescent bulbs and must be recycled. Though mercury is a hazardous waste, the Universal Waste Rules allow thermostats to be recycled without going through a hazardous waste permitting process. Care must be taken not to break the glass bulb containing the mercury during deconstruction and transportation.
- *Site Materials:* One thermostat was found on site.
- *Recycler:* Advanced Health and Safety

## **III. Deconstruction Phase Recycling**

This section includes information for the recycling or proper disposal of the following:

- Concrete and Concrete Block
- Metal
- Cardboard, Paper, Cans, and Bottles
- Wood
- Asphalt Shingles

- Concrete and Concrete Block
- *Background Information:* Clean concrete and concrete block may be crushed and used as fill, aggregate in roadbeds, or for recycling into new concrete. “Clean” means that concrete is free of dirt, clay, wood, and any paint. Recycling these materials costs substantially less than hauling them to a landfill. Recycling also reduces the impacts of quarrying and extracting materials for new concrete.
- *Site Materials:* The existing house sits on concrete basement walls and has an asphalt driveway.

*Recyclers:*

- Homburg Construction, 5715 Milwaukee Street, Madison, WI, 53704; (608) 244-3554
  - **Details:** In order to be recycled to use as aggregate, concrete must be free of rebar. If it contains rebar, it will be used as clean fill. Homburg has a staffed scale and can provide receipts.

Dane County Landfill

7102 US Hwy 12, Madison WI 53718; (608) 838-9555

- **Cost:** The rates are as follows:  
Construction for Recycling - \$52.00 per ton
- **Logistics:** Monday - Friday: 7:00 - 3:00  
**No loads accepted after 2:45** - must be unloaded and out by closing.
- **Details:** Concrete, rock, brick, stone, porcelain, tile

Metal

- *Background Information:* Though not required by law, we recommend recycling all metals. Painted metal, even if it contains lead-bearing paint, is typically recyclable.
- *Site Materials:* The materials that contained sources of metal were the gutters, ducts, exterior hand railing, plumbing and wiring.
- *Recyclers:*

All Metals Recycling 1802 South Park St, Madison, WI 53713; (608) 255-0960

- **Cost:** All Metals Recycling charges about \$150 for dumpster rental. They offer a rebate per ton, depending on the type of metal.
- **Details:** They accept all types of metal for recycling, including iron, steel, aluminum, and copper. Metal must not be contaminated with materials such as cement, plastic wrap, or wood. They also accept metal appliances if the refrigerants and coolants have been removed.

Dane County Landfill

7102 US Hwy 12, Madison WI 53718; (608) 838-9555

- **Cost:** The rates are as follows:  
Construction for Recycling - \$52.00 per ton
- **Logistics:** Monday - Friday: 7:00 - 3:00  
**No loads accepted after 2:45** - must be unloaded and out by closing.
- **Details:** Sheet metal, window frames, pipe, lamps, wire, etc.

### Cardboard, Paper, Cans, and Bottles

- *Background Information:* Cardboard, paper, cans, and bottles must be recycled under Wisconsin law.
- *Site Materials:* Any recyclable materials on-site or generated during demolition must also be recycled.
- *Recycler:*
  - Madison Recycling Center, 2200 Fish Hatchery Road, Madison, WI 53713; (608) 251-2115.
  - **Cost:** No charge for recycling.
  - **Logistics:** Monday – Friday: 7:30am-2:30pm
  - **Details:** The Madison Recycling Center is not affiliated with the City of Madison. It is operated by Recycle America, a division of Waste Management.

### Wood

- *Background Information:* Any unpainted and untreated wood is recyclable. If possible, the demolition contractor should collect unpainted and untreated dimensional lumber and engineered lumber, such as oriented strand board (OSB), plywood, and particleboard for recycling.
- *Site Materials:* Any untreated and unpainted wood that can be separated from other building materials is recyclable. While most of the wood in the structures is painted or treated, wooden studs and subfloor materials may be present.
- *Recycler:*
  - Dane County Landfill  
7102 US Hwy 12, Madison WI 53718; (608) 838-9555
  - **Cost:** The rates are as follows:  
Construction for Recycling - \$52.00 per ton
  - **Logistics:** Monday - Friday: 7:00 - 3:00  
**No loads accepted after 2:45** - must be unloaded and out by closing.
  - **Details:** Plywood, tree trimmings, pallets, cabinets, doors, dimensional lumber, etc.

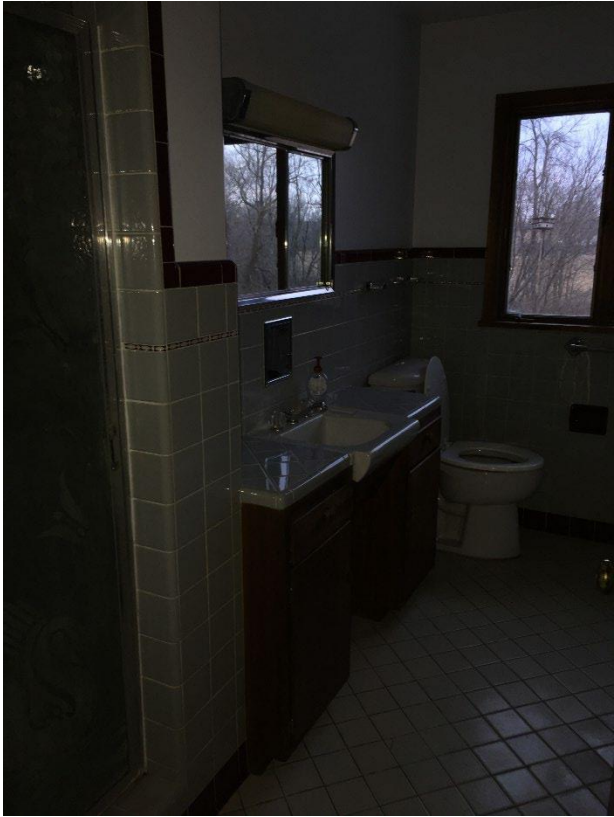
### Asphalt Shingles

- *Background Information:* Asphalt shingles have been banned from the Dane County Landfill. This material can be ground and used as part of a mix to manufacture new asphalt. Recycling asphalt is cost effective and reduces consumption of oil and other raw materials.
- *Site Materials:* The roofing material is asphalt shingles.
- *Recycler:*
  - Dane County Landfill  
7102 US Hwy 12, Madison WI 53718; (608) 838-9555
  - **Cost:** The rates are as follows:  
Clean Loads - \$48.00 per ton (only asphalt shingles, nails, and tar paper)
  - **Logistics:** Monday - Friday: 7:00 - 3:00  
**No loads accepted after 2:45** - must be unloaded and out by closing.
  - **Details:** Must be clean shingles (only asphalt shingles, nails, & tar paper)

Attachment A: Pictures of 3461 Milwaukee Street



Attachment A: Pictures of 3461 Milwaukee Street



Attachment A: Pictures of 3461 Milwaukee Street





Attachment A: Pictures of 3461 Milwaukee Street





# Madison Parks Division

210 Martin Luther King, Jr. Blvd., Room 104  
PO Box 2987  
Madison, WI 53701-2987  
608-266-4711 • [cityofmadison.com/parks](http://cityofmadison.com/parks)



June 3, 2022

Bryan Johnson  
City of Madison Streets Division  
Recycling Coordinator/Public Information Officer

RE: Demolition of 3465 Milwaukee St

The City Parks Division acquired the property located at 3465 Milwaukee Street for a future expansion of O.B. Sherry Park. The existing single family residence is a 4 bedroom, two bath structure, approximately 780 square foot building with a semi-finished basement. It was constructed in 1951. A private contractor will be completing the demolition of the buildings and will recycle and dispose of all materials in accordance with this plan.

The Deconstruction Reuse and Recycling Plan are divided into three sections in order to coordinate with the project timeline.

- I. Reuse Phase:** Salvaging reusable items.
- II. Pre-Deconstruction Phase Recycling:** Hazardous and regulated materials must be removed for proper disposal prior to full deconstruction. These items include lighting, electronics, batteries, refrigerants, appliances, and hazardous chemicals.
- III. Deconstruction Phase Recycling:** Recycling building materials during deconstruction and demolition can reduce negative environmental impacts and reduce landfill fees. Recyclable materials include concrete, brick, asphalt, metal, and wood.

## **I. Reuse Phase**

City staff coordinated with Advanced Health and Safety and with Habitat for Humanity Restore to determine what materials may be salvaged and reused. Due to the age and condition of the houses, the windows and doors were not of the quality that Habitat for Humanity Restore would take for reuse. Habitat for Humanity Restore did remove appliances and cabinets from the home for resale. See pictures in Appendix A.

## **II. Pre-Deconstruction Recycling**

Asbestos testing was completed by Advanced Health and Safety. Asbestos containing Category I Non-Friable materials were found in samples of the black roof flashing mastic surrounding the chimney (10 linear feet). Advanced Health and Safety has removed and safely disposed of the asbestos.

State hazardous waste regulations provide guidance for recycling the following items after the reuse phase is complete and prior to building deconstruction.

- Fluorescent Lighting
- Batteries
- Refrigerants

- Appliances and HVAC equipment
- Hazardous chemicals, including paint
- Thermostats containing mercury
- Computers and Electronics

### Lighting

- *Background Information:* State hazardous waste regulations require all light bulbs and ballasts containing mercury or polychlorinated biphenyls (PCBs) to be recycled. If not reused, bulbs and ballasts must be taken to a recycler or consolidator. The consolidator or recycler must be licensed and in compliance with applicable environmental regulations.
- *Site Materials:* Only incandescent bulbs were seen on site.

### Batteries

- *Background Information:* Batteries may contain toxic heavy metals and chemicals, including nickel, cadmium, manganese, mercury, lead, and sulfuric acid, which threaten our environment if not properly handled.
- *Site Materials:* There were no batteries found on site.

### Refrigerants

- *Background Information:* Refrigerants are used in cooling equipment such as air conditioners and refrigerators. Wisconsin Administrative Code NR 488 regulates handling and disposal of refrigerants. It requires all commercial entities handling and recovering these refrigerants and coolants to register with the Wisconsin DNR and annually certify that they will transport items in a manner that prevents refrigerant releases. Documentation of proper handling must be retained for three years.
- *Site Materials:* A central AC unit was identified on the exterior of the site
- *Recycler:* Advanced Health and Safety.

### Appliances, HVAC equipment and Tires

- *Background Information:* Wisconsin Statute 287.07 requires the recycling of major appliances including clothes washers and dryers, dishwashers, air conditioners, stoves, ovens, microwave ovens, freezers, refrigerators, water heaters, furnaces, dehumidifiers, and boilers. All of these appliances are banned from landfills as of 1991. Microwave ovens may be landfilled only if the capacitor has been removed. Most major appliances are made primarily of high quality steel. They also may contain glass, plastic, rubber, copper, aluminum, and several hazardous materials that require special handling. Any appliances that have refrigerants or coolants must be handled according to instructions in the refrigerants section.
- *Site Materials:* The house contained the typical appliances including a gas stove and a refrigerator in the kitchen. Four tires were found and recycled in the yard of the home.
- *Recycler:* Advanced Health and Safety .

### Paints, Stains, and Other Chemicals

- *Background Information:* Oil-based paints, products containing organic solvents, and latex paint cans that are more than half full are considered hazardous waste and must be taken to a designated recycler for disposal. Latex-based paints can be properly hardened and disposed of in the trash if the can is less than half full.
- *Site Materials:* No chemicals were found on site.

### Thermostats Containing Mercury

- *Background Information:* Mercury-containing thermostats hold mercury equivalent to the amount in 200-300 fluorescent bulbs and must be recycled. Though mercury is a hazardous waste, the Universal Waste Rules allow thermostats to be recycled without going through a hazardous waste permitting process. Care must be taken not to break the glass bulb containing the mercury during deconstruction and transportation.
- *Site Materials:* No thermostats were found on site.

### **III. Deconstruction Phase Recycling**

This section includes information for the recycling or proper disposal of the following:

- Concrete and Concrete Block
  - Metal
  - Cardboard, Paper, Cans, and Bottles
  - Wood
  - Asphalt Shingles
- 
- Concrete and Concrete Block
  - *Background Information:* Clean concrete and concrete block may be crushed and used as fill, aggregate in roadbeds, or for recycling into new concrete. “Clean” means that concrete is free of dirt, clay, wood, and any paint. Recycling these materials costs substantially less than hauling them to a landfill. Recycling also reduces the impacts of quarrying and extracting materials for new concrete.
  - *Site Materials:* The existing house sits on concrete basement walls and has an asphalt driveway.  
*Recyclers:*
    - Homburg Construction, 5715 Milwaukee Street, Madison, WI, 53704; (608) 244-3554
      - **Details:** In order to be recycled to use as aggregate, concrete must be free of rebar. If it contains rebar, it will be used as clean fill. Homburg has a staffed scale and can provide receipts.

#### Dane County Landfill

7102 US Hwy 12, Madison WI 53718; (608) 838-9555

- **Cost:** The rates are as follows:  
Construction for Recycling - \$52.00 per ton
- **Logistics:** Monday - Friday: 7:00 - 3:00  
**No loads accepted after 2:45** - must be unloaded and out by closing.
- **Details:** Concrete, rock, brick, stone, porcelain, tile

### Metal

- *Background Information:* Though not required by law, we recommend recycling all metals. Painted metal, even if it contains lead-bearing paint, is typically recyclable.
- *Site Materials:* The materials that contained sources of metal were the gutters, ducts, exterior hand railing, plumbing and wiring.
- *Recyclers:*

All Metals Recycling 1802 South Park St, Madison, WI 53713; (608) 255-0960

- **Cost:** All Metals Recycling charges about \$150 for dumpster rental. They offer a rebate per ton, depending on the type of metal.
- **Details:** They accept all types of metal for recycling, including iron, steel, aluminum, and copper. Metal must not be contaminated with materials such as cement, plastic wrap, or wood. They also accept metal appliances if the refrigerants and coolants have been removed.

#### Dane County Landfill

7102 US Hwy 12, Madison WI 53718; (608) 838-9555

- **Cost:** The rates are as follows:  
Construction for Recycling - \$52.00 per ton
- **Logistics:** Monday - Friday: 7:00 - 3:00  
**No loads accepted after 2:45** - must be unloaded and out by closing.
- **Details:** Sheet metal, window frames, pipe, lamps, wire, etc.

#### Cardboard, Paper, Cans, and Bottles

- *Background Information:* Cardboard, paper, cans, and bottles must be recycled under Wisconsin law.
- *Site Materials:* Any recyclable materials on-site or generated during demolition must also be recycled.
- *Recycler:*  
Madison Recycling Center, 2200 Fish Hatchery Road, Madison, WI 53713; (608) 251-2115.
  - **Cost:** No charge for recycling.
  - **Logistics:** Monday – Friday: 7:30am-2:30pm
  - **Details:** The Madison Recycling Center is not affiliated with the City of Madison. It is operated by Recycle America, a division of Waste Management.

#### Wood

- *Background Information:* Any unpainted and untreated wood is recyclable. If possible, the demolition contractor should collect unpainted and untreated dimensional lumber and engineered lumber, such as oriented strand board (OSB), plywood, and particleboard for recycling.
- *Site Materials:* Any untreated and unpainted wood that can be separated from other building materials is recyclable. While most of the wood in the structures is painted or treated, wooden studs and subfloor materials may be present.
- *Recycler:*  
Dane County Landfill  
7102 US Hwy 12, Madison WI 53718; (608) 838-9555
  - **Cost:** The rates are as follows:  
Construction for Recycling - \$52.00 per ton
  - **Logistics:** Monday - Friday: 7:00 - 3:00  
**No loads accepted after 2:45** - must be unloaded and out by closing.
  - **Details:** Plywood, tree trimmings, pallets, cabinets, doors, dimensional lumber, etc.

### Asphalt Shingles

- *Background Information:* Asphalt shingles have been banned from the Dane County Landfill. This material can be ground and used as part of a mix to manufacture new asphalt. Recycling asphalt is cost effective and reduces consumption of oil and other raw materials.
- *Site Materials:* The roofing material is asphalt shingles.
- *Recycler:*

#### Dane County Landfill

7102 US Hwy 12, Madison WI 53718; (608) 838-9555

- **Cost:** The rates are as follows:  
Clean Loads - \$48.00 per ton (only asphalt shingles, nails, and tar paper)
- **Logistics:** Monday - Friday: 7:00 - 3:00  
**No loads accepted after 2:45** - must be unloaded and out by closing.
- **Details:** Must be clean shingles (only asphalt shingles, nails, & tar paper)

Attachment A: Pictures of 3465 Milwaukee Street



Attachment A: Pictures of 3465 Milwaukee Street





Attachment A: Pictures of 3465 Milwaukee Street

